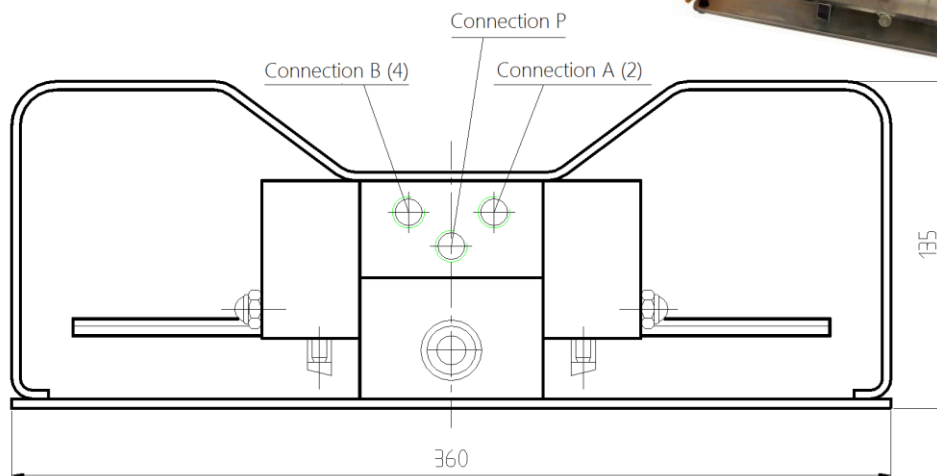
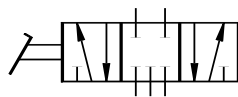


Foot valve 5/3



Application:

Our check valve is designed to function as a piston slide valve, thereby ensuring a precise dosage of the required amount of air. High-quality piston seal rings ensure a high degree of reliable leakproofness and long service life. The valve is therefore ideally suited for hoisting equipment, elevating platforms, etc. in any situation where a high degree of operating safety is absolutely required.

Design:

Valve is suitable for maintenance-free operation, it is recommended only clean and dry air.

The valve housing is made of anodized aluminum. The other parts are made of corrosion-free or corrosion-resistant materials.

Design:	5/3 control valve, normally closed in its basic position
- NEW -	5/3 control valve, Basic position exhausted
Medium:	Filtered, lubricated or non-lubricated compressed air
Connection:	G 1/4"
Weight:	5 Kg
Air consumption:	6 mm
Air consumption:	approx. 900 l/min
Operating pressure:	2 till 8 bar