

Drilling unit B63 – multi-spindle 125 stroke with oil brake cylinder



Application:

The B63 drilling unit offers versatile application options for drilling metal, wood and plastic.

Special features:

The B63 can be supplied with a patented system to detect feed and rapid motion switching, without the need for stops or cams. Thus, for example, the hole level as well as spaces of profile materials can be automatically recognised.

This results in much shorter drilling times than with conventional drilling units.

Another special feature is that the oil brake cylinder can drive the full stroke of the drilling unit in feed and rapid motion. In the standard version, the feed is switched on by an adjustable stop, or for an additional charge as a snap-action rapid traverse feed.

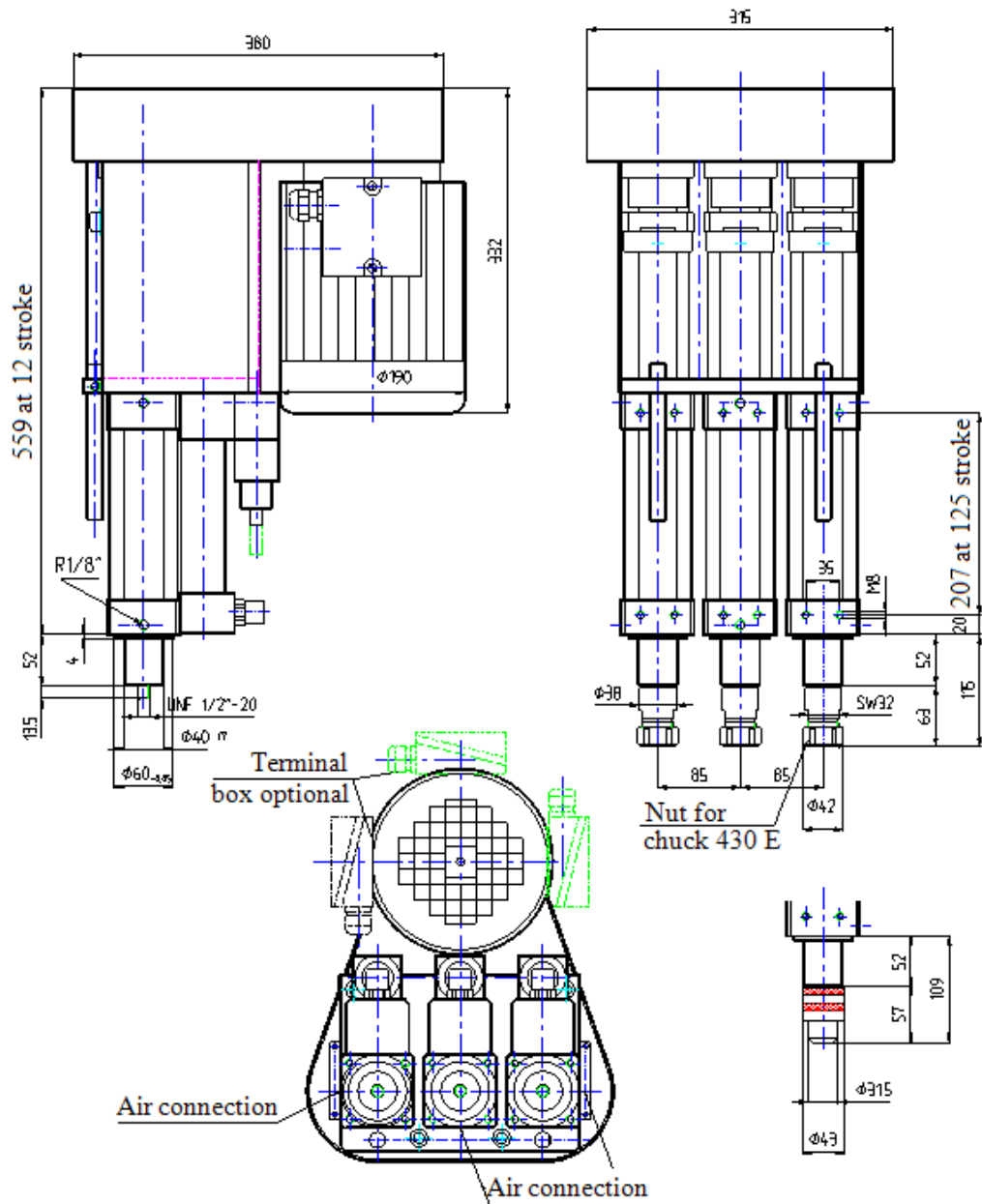
Design:

The drilling unit is mostly made of anodized aluminium and corrosion-free/corrosion-resistant material. Seals and guides are maintenance-free, so that the unit can be operated without oiler and with clean and dry air.

Equipment:

The drilling unit is equipped with adjustable power stroke, depth stop, signalling and oil brake cylinder as standard.

Return stroke, rapid-flange feed-off valve and control system for DS1 rapid feed are available on request.



Technical data:

Drive power:	optionally between 1.1 KW – 2.2 KW
Spindle speeds:	at 1.1 KW 540 - 5000 U/min at 1.5 KW 833 - 5000 U/min at 2.2 KW 1550 - 5000 U/min
Drive:	three-phase motor with V-ribbed belt
Feed:	pneumatic, max. 125 mm with oil brake cylinder
Feed force:	at 6 bar 1120 N at 8 bar 1490 N
max. drilling capacity:	in St 50 $\phi 12$ mm
Tool holder:	UNF 1/2"-20 threads for drill chuck, gang-style spindle head and chuck holder
Weight:	approx. 58 kg
Assembly:	on the head 4 x M8 with centering spigot $\phi 60$ mm and pitch circle $\phi 80$ mm or on head and cover 4 x M8 per spindle (see drawing)