

Drilling unit B100/140 with oil brake cylinder



Application:

The B100 drilling unit offers versatile application options for drilling metal, wood and plastic.

Special features:

The B100 can be supplied with a patented system to detect feed and rapid motion switching, without the need for stops or cams. Thus, the hole level as well as the spaces of profile materials can be recognised.

This results in much shorter drilling times than with conventional drilling units.

Another special feature is that the oil brake cylinder can drive the full stroke of the drilling unit in feed and rapid motion. In the standard version, the feed is switched on by an adjustable stop, or for an additional charge as a snap-action rapid traverse feed.

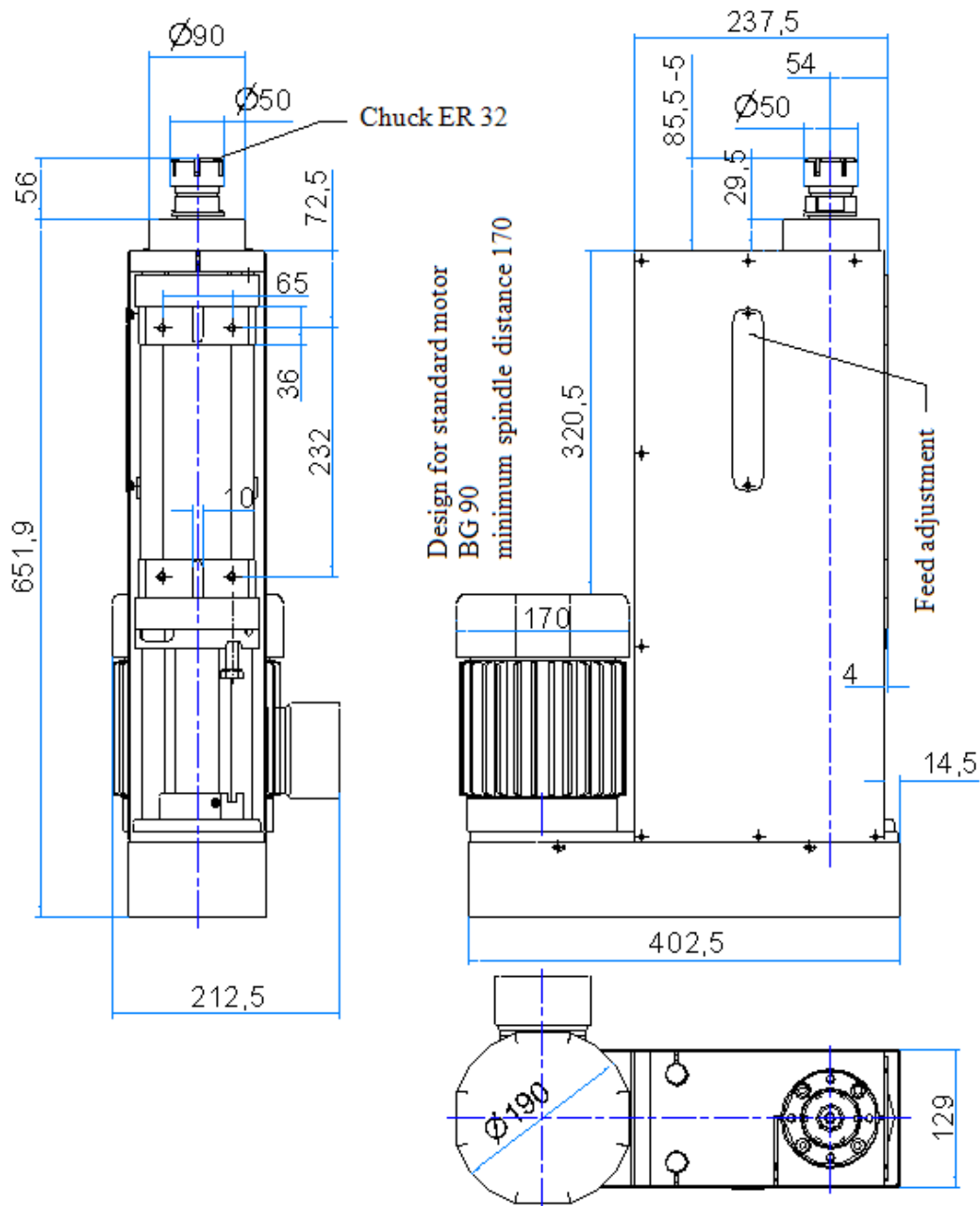
Design:

The drilling unit is mostly made of anodized aluminium and corrosion-free/corrosion-resistant material.

Seals and guides are maintenance-free, so the unit can be operated without oiler and with clean and dry air.

Equipment:

The drilling unit is equipped with depth stop, signalling and oil brake cylinder as standard, as well as an inductive sensor for bore depth and starting position.



Technical data:

- Drive power:** optionally between 1.1 KW – 2.2 KW
- Spindle speeds:** at 2.2 KW 1000-6000 U/min
at 1.5 KW 500-3600 U/min
at 1.1 KW 330-2600 U/min
- Drive:** three-phase motor with V-ribbed belt
- Feed:** pneumatic, with oil brake cylinder
the standard stroke is 140 mm
- Feed force:** at 6 bar 4000 N
- max. drilling capacity:** in St 50 Ø 20 mm
- Tool holder:** chuck ER 32, clamping range Ø 3-20 mm approx. 50 kg
- Assembly:** 4 x M8 (see drawing)