

Switching valve 2/2-way valve Air motor off / on



Application:

The switching valve is used for example for controlling air motors. When pulsing while the air motor is turned on / stopped.

Execution:

The valve is suitable for maintenance-free operation. Only clean and dry air is recommended. The valve body is made of aluminum. The other parts are made of corrosion-resistant or corrosion-protected materials.

Article designation and pneumatic symbol:

Shut-off valve SVA 7 (Part No. 12 06 00 1000)

Switching valve engine off

Connection G 1/8"; nominal width 7mm

Switch-on valve SVE7 (Part No. 12 06 00 1001)

Switching valve engine on

Connection G 1/8"; nominal width 7mm

Shut-off valve SVA 8 (Part No. 12 06 00 1002)

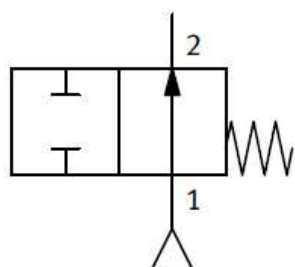
Switching valve engine off

Connection G 1/4"; nominal width 8mm

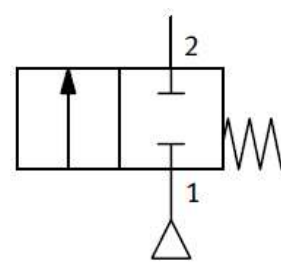
Switch-on valve SVE 8 (Part No. 12 06 00 1003)

Switching valve engine on

Connection G 1/4"; nominal width 8mm



normally open



normally closed

Technical data:

Version:

Switching valve motor off / motor on

Medium:

Filtered, lubricated or non-lubricated compressed air

Connection:

SVA7 + SVE7: G 1/8"

SVA8 + SVE8: G 1/4"

Nominal diameter:

SVA7 + SVE7: NW 7 mm

SVA8 + SVE8: NW 8 mm

Control air:

at least 2.5 bar

Weight:

SVA7 + SVE7: 0.2 Kg

SVA8 + SVE8: 0.3 Kg