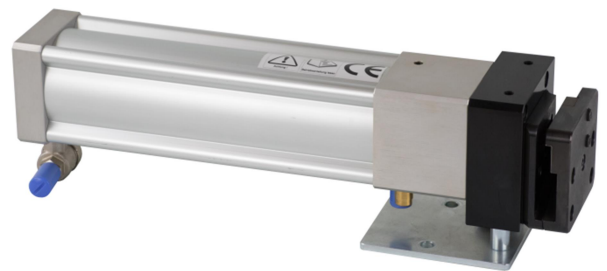


Punching machine UNI – POWER for processing all common window hardware



Tool for chain sections

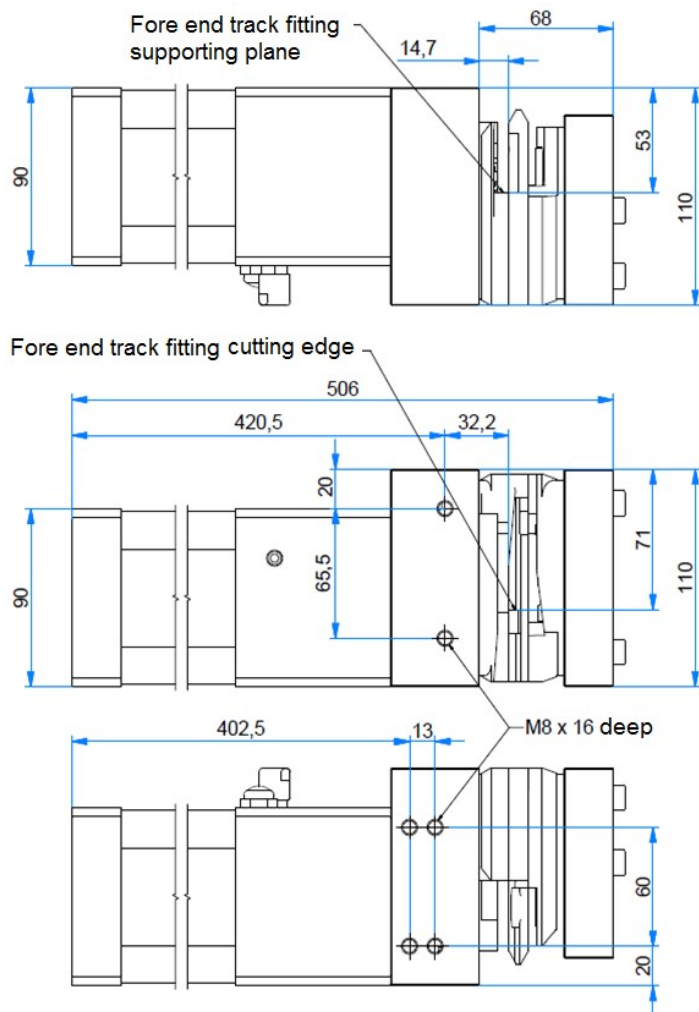


Tool Schere

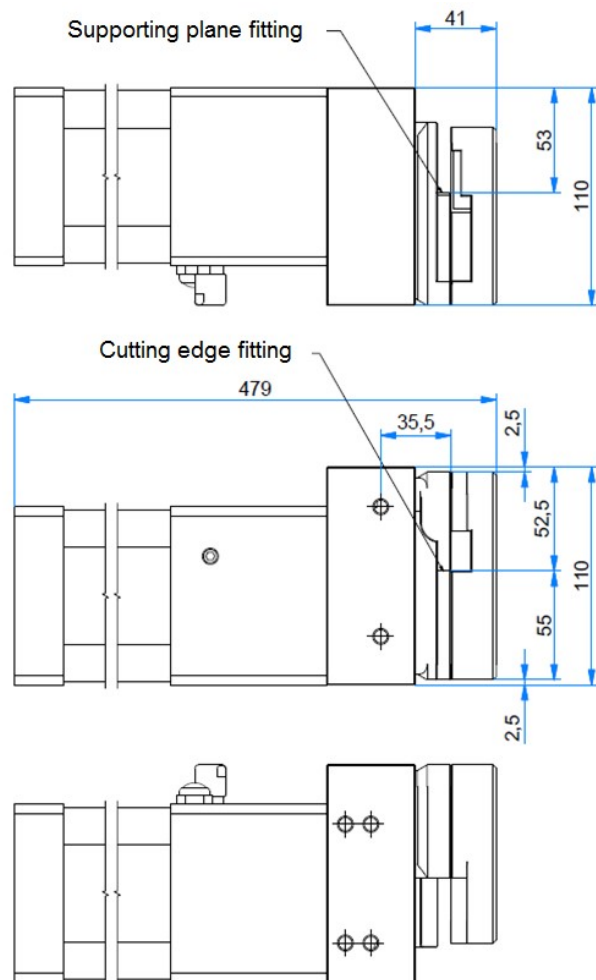
Our punching machine has the following advantages:

- Through its compact and enclosed design with a large oil reserve, a long maintenance-free operation is ensured in any mounting position.
- The hydro-pneumatic operation achieves high-cutting forces during impact-free punching.
- The punching machine is available in two designs:
 - Attachment on the left with the fitting process of the right
 - Attachment on the right with the fitting process of the left
- Our punching machine needs a 5/2 way valve to operate and a filter regulator with a preset operating pressure of 5 - 6 bar.
- The delivered state of the punch is without accessories. For an additional charge, a connection kit consisting of a fixed filter regulator, set and secured at 5 - 6 bar and a 5/2 way foot valve with pluggable NW 6 mm hose connections with 6m hose is available and a base for bolting to the work table. A linear stop is also available at an additional cost.
- The angle punch is primarily used for confined areas.
- With this tool system, which has been well thought out down to every detail, it is possible to easily change the hole punch, die and cutting punch when they are worn out or broken in a few minutes and also without the risk of any oil loss.

Tool for chain sections



Fitting punch Schere

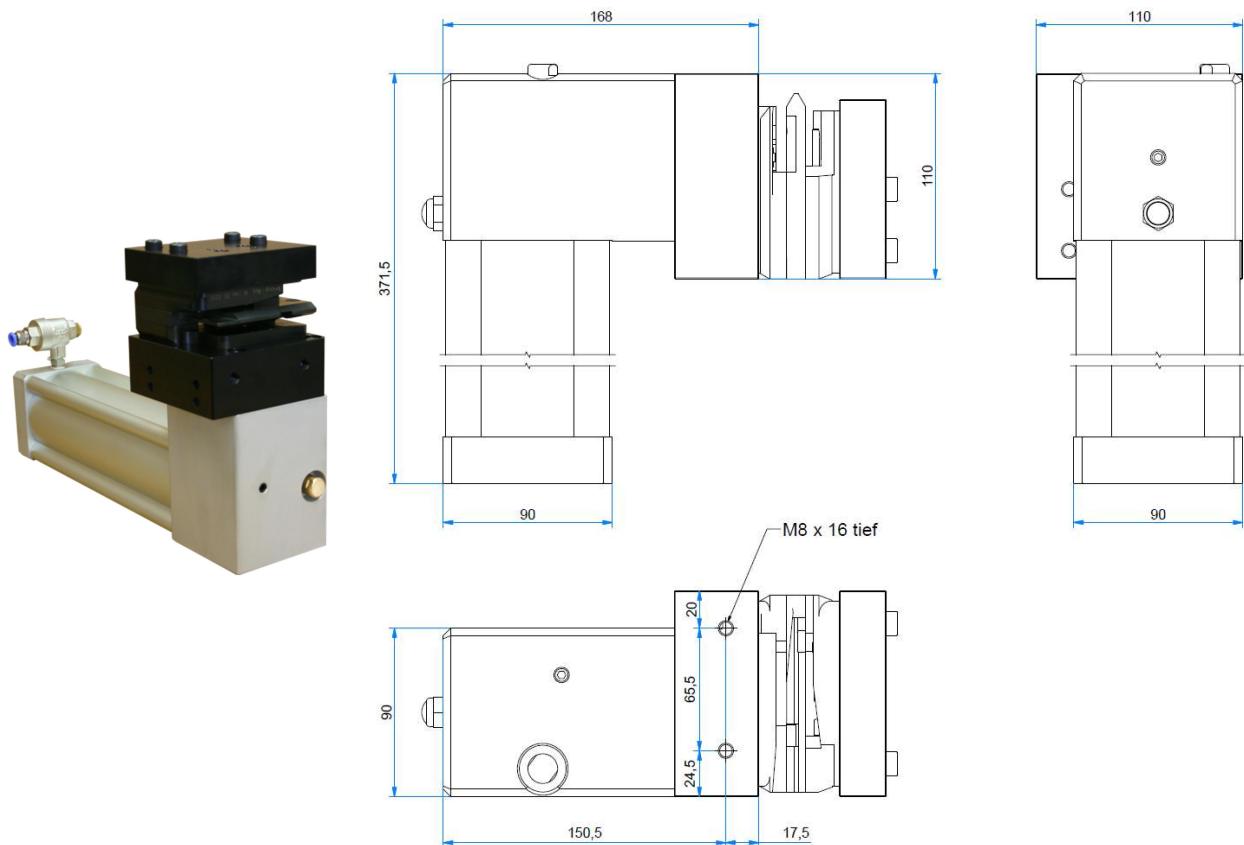


- On our punching machine, the tools for the various types of fittings can be exchanged without much effort. The different tools have been designed so that the cutting edge and support on the face plate is always at the same level.

Currently we stock the tools for the following types of fittings:

- Straight cut (Schere)
- Siegenia Aubi (Aubi A300, Favorit with hole Ø4,5, Titan IP)
- Winkhaus
- Roto
- Maco Multi Matic
- ARTech

Each also available in version angle punch:



Technical data:

Operating pressure:	5 - 8 bar recommended for low tool wear max. 6 bar
Cutting load stroke force:	30,9 KN at 6 bar
Stroke:	13 mm
Transmission ratio:	1:10,25
Air consumption:	At 6 bar 5,3NL/ stroke
Nominal with for air connection:	7 mm 1/4"
Oil used - Type:	Esso–Univis N46
Weight:	10,6 kg straight version with tool chain sections 9,8 kg straight version with tool Schere 11,2 kg execution of angle punch with tool chain sections 10,4 kg execution of angle punch with tool Schere
Mounting thread:	2 x M8

