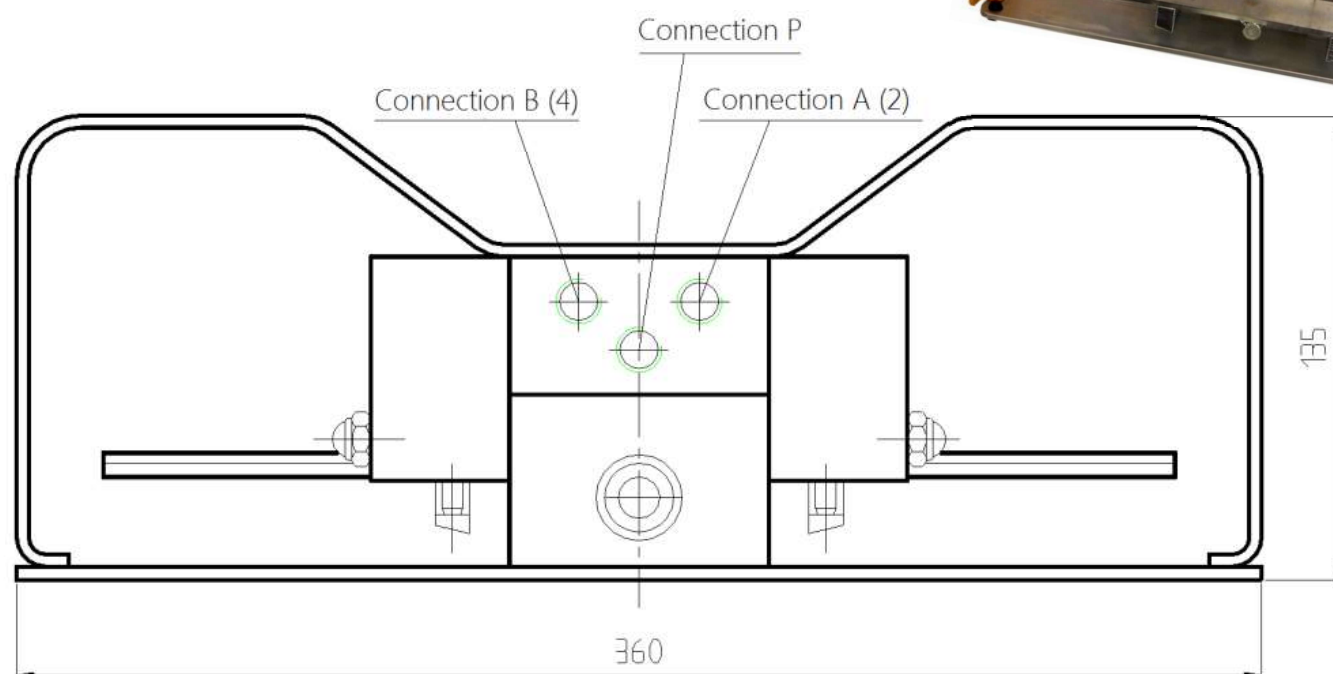
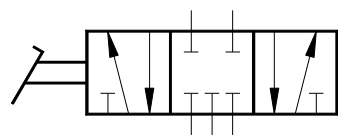


## Foot valve 5/3



### Application:

Our check valve is designed to function as a piston slide valve, thereby ensuring a precise dosage of the required amount of air. High-quality piston seal rings ensure a high degree of reliable leakproofness and long service life. The valve is therefore ideally suited for hoisting equipment, elevating platforms, etc. in any situation where a high degree of operating safety is absolutely required.

### Design:

Valve is suitable for maintenance-free operation, it is recommended only clean and dry air.

The valve housing is made of anodized aluminum. The other parts are made of corrosion-free or corrosion-resistant materials.

<b>Design:</b>	5/3 control valve, normally closed in its basic position
<b>- NEW -</b>	5/3 control valve, <b>Basic position exhausted</b>
<b>Medium:</b>	Filtered, lubricated or non-lubricated compressed air
<b>Connection:</b>	G 1/4"
<b>Weight:</b>	5 Kg
<b>Air consumption:</b>	6 mm
<b>Air consumption:</b>	approx. 900 l/min
<b>Operating pressure:</b>	2 till 8 bar