

Fixed corner bearing drill head MSK-606-SR for window machine construction



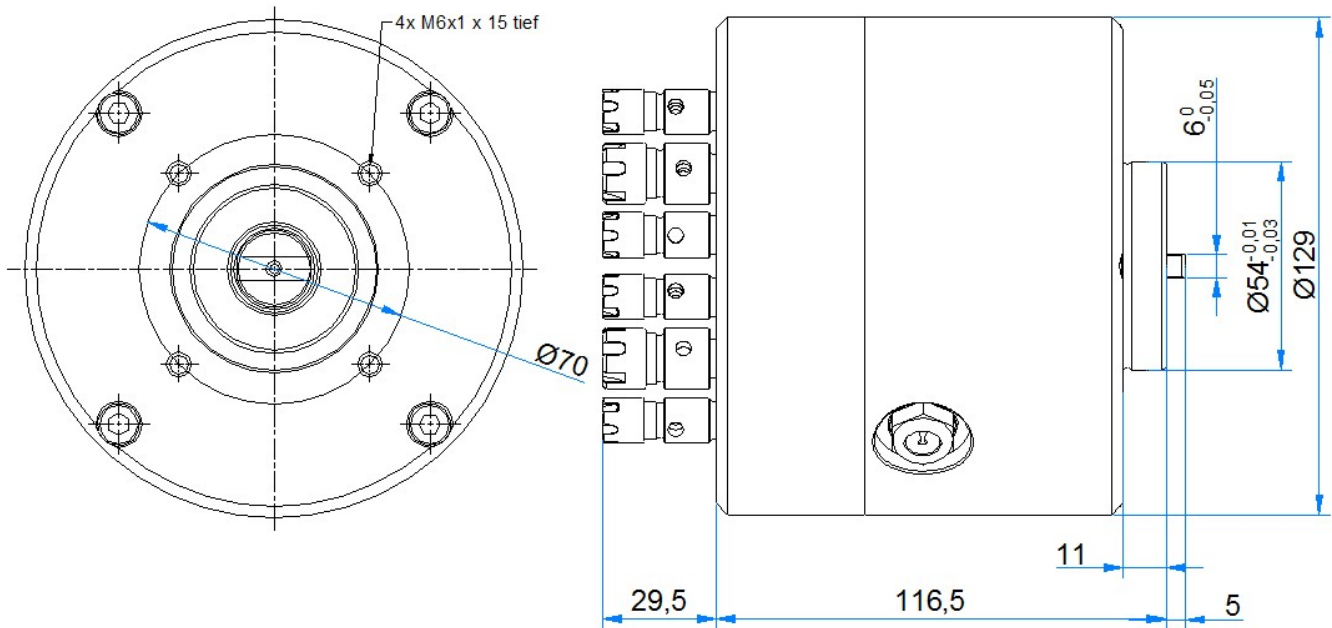
The benefits of our drill heads:

- The spindle rows are situated in the drill head centre, and therefore, the drive unit does not have to be newly aligned when changing the fitting/drill head.
- No different (right and left) drills need to be used, as the spindles rotate in any drive direction to the right.
- Tool clamping:
Our spindles are equipped with ER 8 and ER 11 chuck holders with a clamping nut. Thus, our spindles are shorter and more stable and standard parts can be utilized. Therefore, no special chucks need to be obtained from the drill head manufacturer.
- The spindles operate with, the respective bore diameters suitable speed at an input speed of 1.500 U / min.
 - The spindles with the collet chuck size **ER 8 thus have a transmission ratio of $i = 0.5$** and are suitable for drilling up to $\varnothing 3.5$ mm
 - The spindles with the collet chuck size **ER 11 have a transmission ratio of $i = 0.8$** and are suitable for drilling up to $\varnothing 7$ mm

The drill bit types, according to the following list, are generally available within two weeks since all the components for assembly are in stock.

Design:

The housing and the spindle plate are made of high-strength aluminium.
The spindles and gear wheels are hardened, ground and run in an oil bath.



Technical data:

Drilling capacity in St 50:

max. 7 mm

Smallest drill distance:

12 mm

Transmission ratio at ER 8:

$i = 0,5$

Tool clamping:

Chuck ER 8 clamping range

from 0.5 mm to max. 5 mm clamping diameter
in increments of 0,5 mm

Transmission ratio at ER 11:

$i = 0,8$

Tool clamping:

Chuck ER 11 clamping range

from 0.5 mm to max. 7 mm clamping diameter
in increments of 0,5 mm

Transmission oil used:

Mobil Teresstic T 32

Weight:

approx. 4,2 kg

Mounting thread:

see drawing

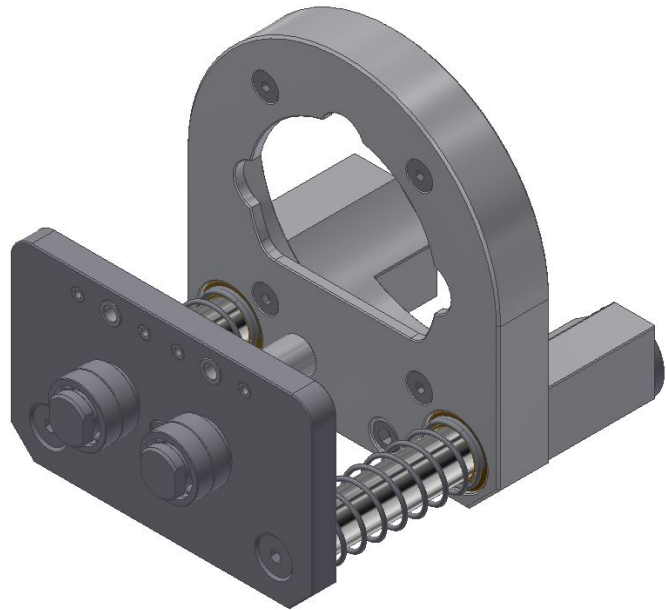
Name	Hole spacing					
MSK 08 01 00 1000 Roto	• 16	• 16	• 16	• 16	• 16	•
ER8 Transmission i = 0,5	x	x	x	x	x	x
MSK 08 01 00 1001 Roto NT	• 16	• 16	• 16	• 16	• 16	•
ER8 Transmission i = 0,5	x		x	x		x
ER11 Transmission i = 0,8		x			x	
MSK 08 01 00 1003 Winkhaus	• 16	• 16	• 16	• 16	• 16	•
ER8 Transmission i = 0,5		x	x	x	x	
ER11 Transmission i = 0,8	x					x
MSK 08 01 00 1004 Maco Trend	• 14	• 14	• 14	• 14	• 14	•
ER8 Transmission i = 0,5		x	x	x	x	
ER11 Transmission i = 0,8	x					x
MSK 08 01 00 1005 Maco Trend	• 14	• 14	• 14	• 14	• 14	•
ER8 Transmission i = 0,5	x	x	x	x	x	x
MSK 08 01 00 1006 Siegenia	• 14,5	• 14,5	• 17	• 14,5	• 14,5	•
ER8 Transmission i = 0,5	x		x	x		x
ER11 Transmission i = 0,8		x			x	
MSK 08 01 00 1007 GU Euro	• 15	• 16,2	• 21,6	• 16,2	• 15	•
ER8 Transmission i = 0,5		x	x	x	x	
ER11 Transmission i = 0,8	x					x
MSK 08 01 00 1008 Aubi	• 16,6	• 16,6	• 16,6	• 16,6	• 16,6	•
ER8 Transmission i = 0,5	x	x	x	x	x	x
MSK 08 01 00 1009 GU	• 15	• 16,2	• 21,6	• 16,2	• 15	•
ER8 Transmission i = 0,5	x	x	x	x	x	x
MSK 08 01 00 1010	• 14	• 12	• 12	• 12	• 14	•
ER8 Transmission i = 0,42	x	x	x	x	x	x
MSK 08 01 00 1011 ROMB SV	• 12	• 12	• 24	• 12	• 12	•
ER8 Transmission i = 0,42	x	x	x	x	x	x
MSK 08 01 00 1013 Siegenia Neu	• 14,5	• 14,5	• 17	• 14,5	• 14,5	•
ER8 Transmission i = 0,5		x	x	x	x	
ER11 Transmission i = 0,8	x					x
MSK 08 01 00 1015 Siegenia Neu	• 14,5	• 14,5	• 17	• 14,5	• 14,5	•
ER8 Transmission i = 0,5	x	x	x	x	x	x
MSK 08 01 00 1016 ARTech	• 12	• 13,5	• 14	• 13,5	• 12	•
ER8 Transmission i = 0,5		x	x	x	x	
ER8 Transmission i = 0,82	x					x
MSK 08 01 00 1017 FUHR	• 16,5	• 13,5	• 18	• 13,5	• 16,5	•
ER8 Transmission i = 0,5	x	x	x	x	x	x
MSK 08 01 00 1018 Multi Mammut	• 19	• 19	• 19	• 19	• 22	•
ER11 Transmission i = 0,5		x	x	x	x	
ER16 Transmission i = 1,24	x					x

Accessories for our standard drill heads:

Our drill heads can be equipped with a spring-loaded drill guide plate upon request. The cost-effective option is the attached drill guide..

This is designed so that it can be retrofitted to our standard corner bearing drill heads.

Only the drill guide plate is adapted to the specific hardware type according to the drilling pattern and corner bearing.



Integrated spring-loaded drill guide plate as a special drill head

We would be happy to produce your individual drilling pattern with an integrated spring-load drill guide plate.



The left image shows the drilling pattern „GU“ in the special version with an integrated spring-loaded drill guide and customer-specific drive flange.