

## **Drilling unit B100/140 with oil brake cylinder**



### **Application:**

The B100 drilling unit offers versatile application options for drilling metal, wood and plastic.

### **Special featureen:**

The B100 can be equipped with a com bar to skip cavities. This is attached to the air connection side of the head and cover of the unit. This results in much shorter drilling times.

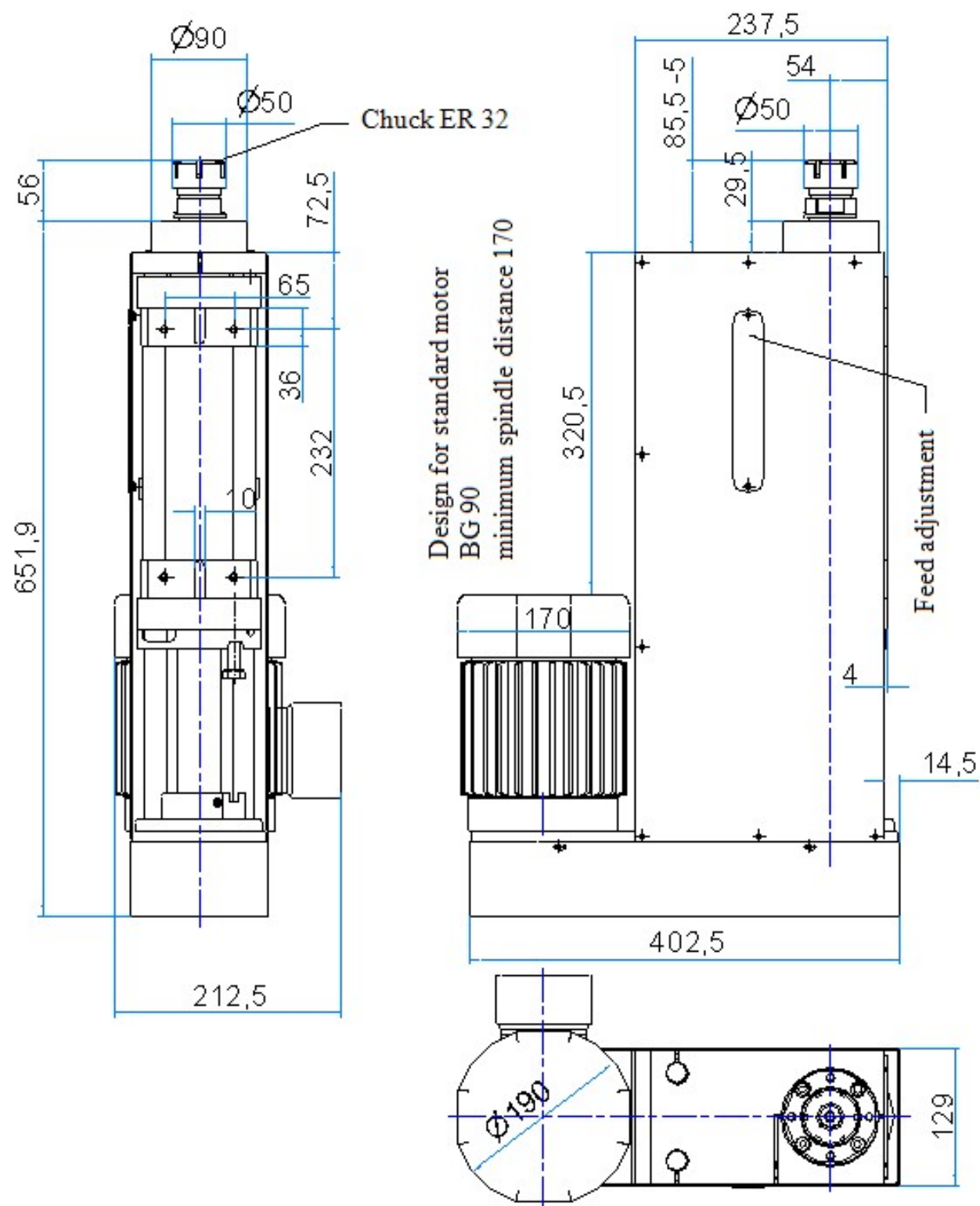
Another special feature is that the oil brake cylinder can drive the full stroke of the drilling unit in feed and rapid motion. In the standard version, the feed is switched on by an adjustable stop, or for an additional charge as a snap-action rapid traverse feed.

### **Design:**

The drilling unit is mostly made of anodized aluminium and corrosion-free/corrosion-resistant material. Seals and guides are maintenance-free, so the unit can be operated without oiler and with clean and dry air.

### **Equipment:**

The drilling unit is equipped with depth stop, signalling and oil brake cylinder as standard, as well as an inductive sensor for bore depth and starting position.



## Technical data:

<b>Drive power:</b>	optionally between 1,1 KW - 2,2 KW
<b>Spindle speed:</b>	at 2,2 KW 1000-6000 Rpm at 1,5 KW 500-3600 Rpm at 1,1 KW 330-2600 Rpm
<b>Drive:</b>	three-phase motor with V-ribbed belt
<b>Feed:</b>	pneumatic, with oil brake cylinder the standard stroke is 140 mm
<b>Feed force:</b>	at 6 bar 4000 N
<b>max. drilling capacity:</b>	in St 50 Ø 20 mm
<b>Tool holder:</b>	chuck ER 32, clamping range Ø 3-20 mm HSK63-C Weldon Ø25
<b>Weight:</b>	approx. 50 kg
<b>Assembly:</b>	4x M8 (see drawing)
<b>By request:</b>	Internal cooling of tools